

Port facilities - 1:500
upper level: fish market
middle level: parking, marina recreation area, fuel tank
shore level: boats recovery

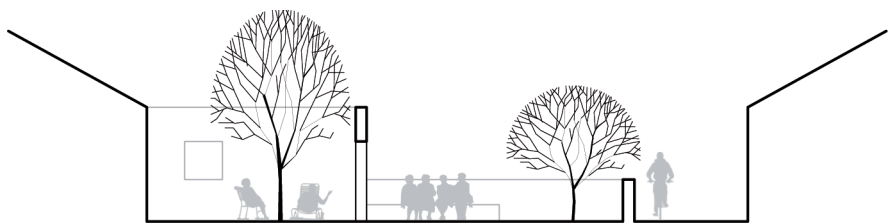
1. Multipurpose community area (sociocultural activities, outdoor activities, events, festivals)
2. Tourists accommodation
3. Flexible multipurpose facilities (sociocultural activities, production, research, mixed use)
4. Basic need items/local products shops
5. Parking area
6. Existing housing qualification and new adaptable housing supply
7. System of shared and neighborhood open spaces
8. Allotment completion with new housing (adaptable to common facilities and crafts workshops)
9. Rota Vicentina footpath qualification
10. Public spaces along Rota Vicentina
11. Shops and bars
12. Restaurant
13. Public square and panoramic point
14. Panoramic points
15. Boat repair workshop
16. Rehabilitation of the fish sale spot
17. New port facilities
18. Seaport implementation
19. Fish traps and baits storage
20. Sea water pool
21. South Bay footpath
22. Mill ruins qualification
23. Fish hatchery and wave energy converters
24. Boat connections to North and South Bay
25. Community farming



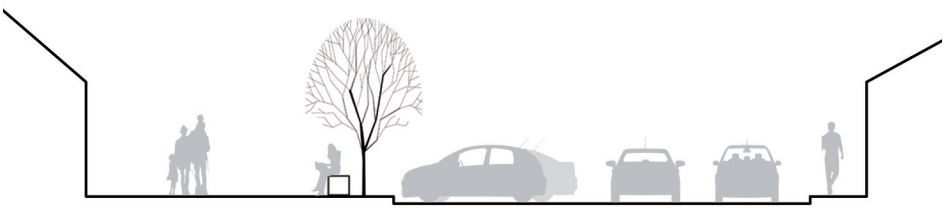
Existing houses (light grey)
New flexible housing (dark grey)



Access road 1:200



Shared and neighborhood spaces 1:200



Public spaces 1:200